

[Print this Page](#) | [Email to a friend](#) | [Email the Features Editor](#)

▸ [Front Page](#)

▸ [News](#)

▸ [Opinion](#)

▸ [Sports](#)

▸ [Obituaries](#)

▸ [Sandhills Scene](#)

[Bridge](#)

[Clubs](#)

[Columnists](#)

[Education](#)

[Out & About](#)

[Religion](#)

[Church Listings](#)

[Weddings](#)

[The Word](#)

▸ [Extra](#)

▸ [Books](#)

▸ [Sandhills Guide](#)

▸ [The Job Network](#)

▸ [Classifieds](#)

▸ [Real Estate](#)

▸ [Real Estate Listings](#)

▸ [Summer Camps](#)

▸ [Blogs](#)

▸ [Photo Gallery](#)

▸ [Business Directory](#)

▸ [Advertising](#)

▸ [Peak Locations](#)

'Virtual Event' Fundraiser for Nonprofit

Nonprofit organization Friend to Friend has announced its latest plans for a fundraising event that is "destined to be the talk of the town," says a spokesman. "Invitations went out today to a select group of Moore County residents to attend the inaugural 'Virtual Event to Remember' to benefit the area's only organization dedicated to the support of victims of domestic violence and services designed to prevent violence and sexual assault in our community."

This creative effort enlists supporters to "not attend this non-event" by allowing donors to respond with commitments like:

n Watching TV on the couch

n Watching TV on the couch with glass of champagne

n Watching TV on the couch with glass of champagne and chocolate

n All of the above, and perhaps a little more

With a promise to participants to have absolutely nowhere to go, no ties to tie, no heels to strap on, no standing in line and no waiting for refreshments, this "virtual event" is sure to please everyone, says the spokesman.

Requested donations start at just \$150, with 100 percent of all money raised going directly to Friend to Friend.

"The event is virtual but the need is very real," said Jackie Thamm, executive director of Friend to Friend. "Our Board of Directors was very creative in coming up with this fun new twist to enlist the support of our community in a time of great need for the organization. The economic times can lead to budget cuts and unfortunately to even greater demand for our services in support of victims of domestic violence and sexual assault. We hope the area embraces our idea to not attend this non-event and in so doing donate to such a worthy cause."

To participate, those interested can call Friend to Friend at (910) 944-3333, e-mail friend@pinehurst.net or mail a donation to Friend To Friend, 111 McNeill St., Carthage, NC 28327.

Classifieds

[Place an Ad](#)
[View Classifieds](#)

Display Ads

[Place an Ad](#)

Subscribe

[Subscribe](#)
[Vacation Starts/Stops](#)

Real Estate

[Place an ad](#)
[Search listings](#)
[Property Transactions](#)

advertisement

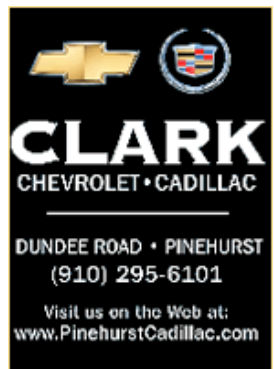


Pinehurst® Golf Shop
Summer Sale
Discounts from 20-65%
July 10 - 12, 2009
Click here or call 910-235-8154
PINEHURST 1895

For further information or to see a copy of the invitation, visit www.moorefriends.org.

Friend to Friend is currently in its 20th year of service as the only domestic violence and sexual assault crises agency in Moore County. The organization provides comprehensive services that include emergency safe shelter, counseling, a crisis hot line, court advocacy and accompaniment, and the Child Assault Prevention Program (CAPP) in Moore County Schools. The mission of Friend to Friend is to help build a community in which everyone is free from the threat of physical, sexual and emotional abuse.

A Friend to Friend Thrift Shop is located at 113 McNeill Street, Carthage.



Comments

Name

E-mail (Will not appear online)

Title

Comment

To prevent spam please enter the text you see in the image below in the text box. Your comment will only be submitted if the strings match. Note: the text is **case-sensitive**.

These comments are moderated. Your remarks will appear in a few minutes



Submit Comment